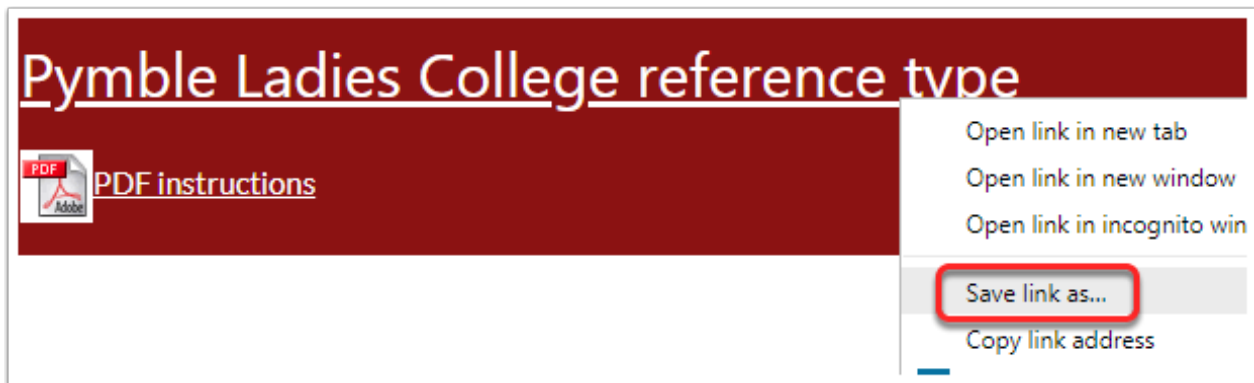


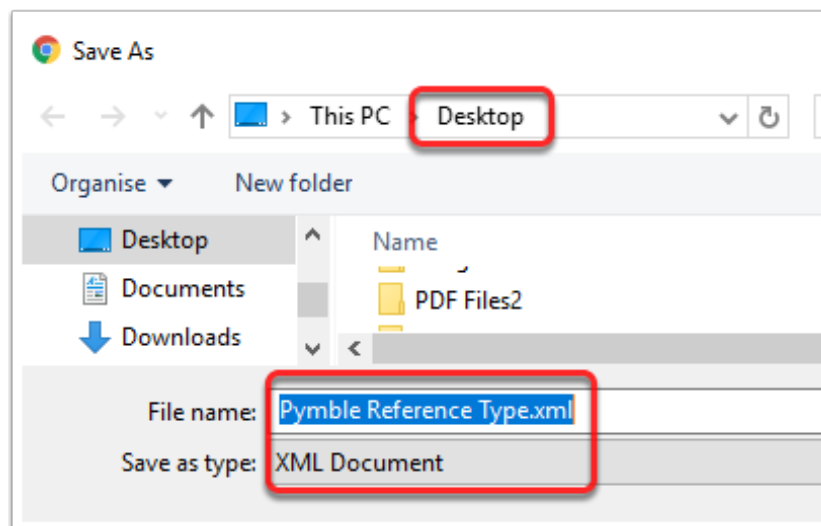
Enter <https://www.crandon.com.au/endnote/faq/Styles/styles.html> in your browser

Right click on the link to Pymble Ladies College reference type

Select Save link as...

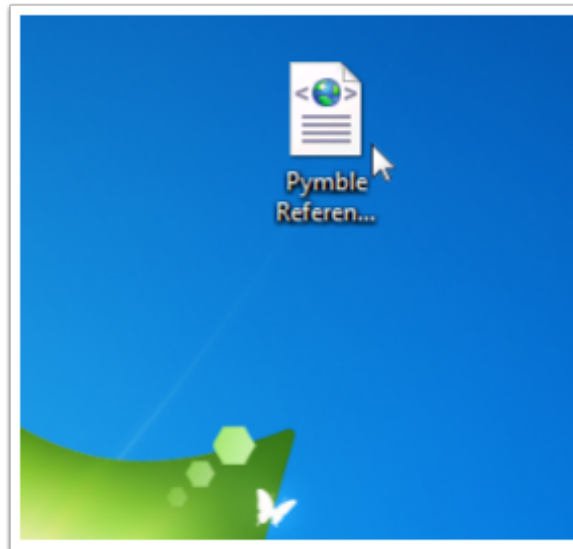


Save the Pymble Reference Type.xml to the Desktop



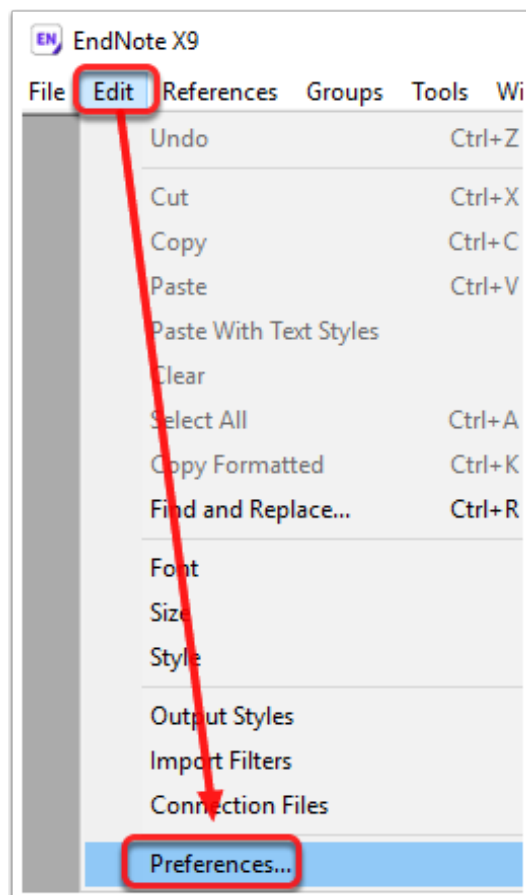
The file should appear on the Desktop

You can now import the reference types into EndNote



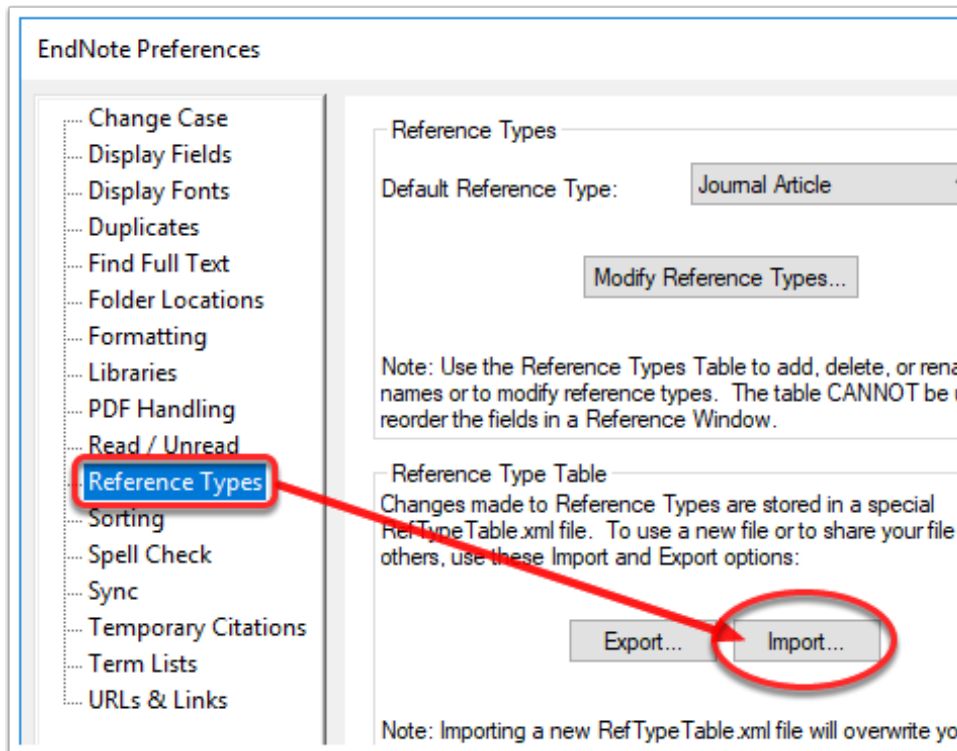
Open EndNote

Select the Edit Menu > Preferences...



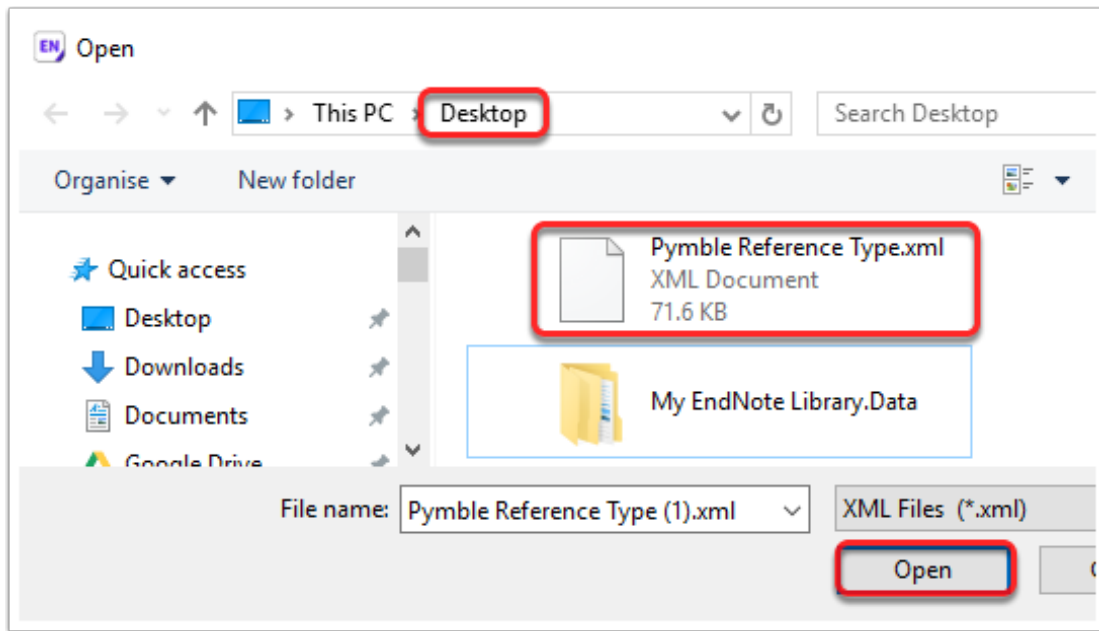
EndNote Preferences

Select Reference Types from the left column and then select the Import... button.

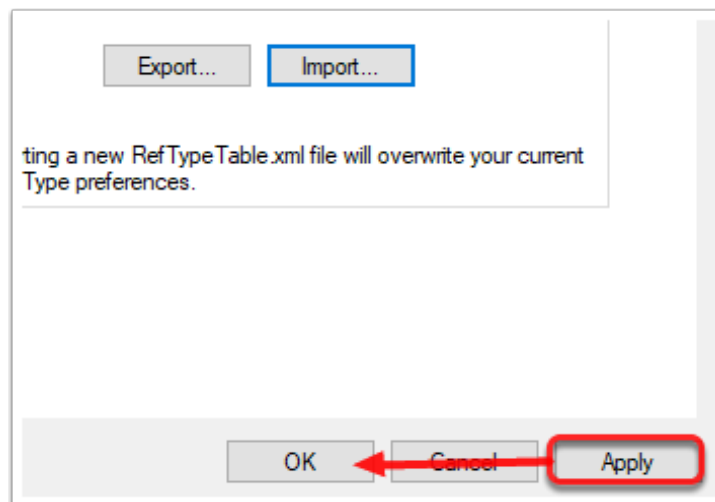


Import from the desktop

Navigate to the desktop and select the Pymble Reference Type.xml file

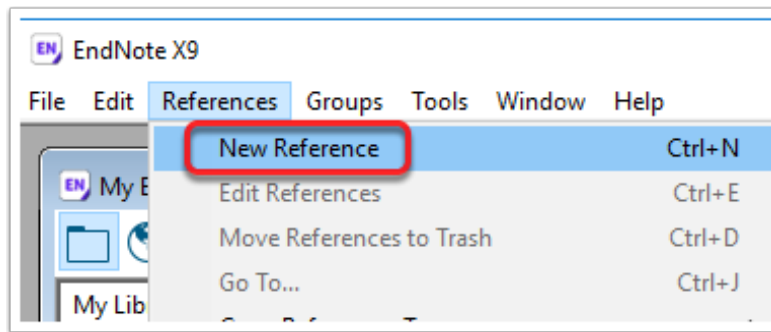


Click Apply then OK in the EndNote preferences window.



To check the import

Select the References menu in EndNote > New Reference or Ctrl+N



Reference Type

In the Reference Type dialogue box you will see a short list of reference types.

